



Schnaithmann



Partner of the best 

Flexible Profile Systems and Custom Workstation Solutions

Simply clever and cleverly simple.



Our symbol means your advantage: the Schnaithmann Efficiency Plus symbol stands for the advantages our products and services offer you.



Efficiency Plus:

MODULAR SYSTEMS

Our product solutions can be easily expanded to keep pace with your production demands.

Efficiency Plus:

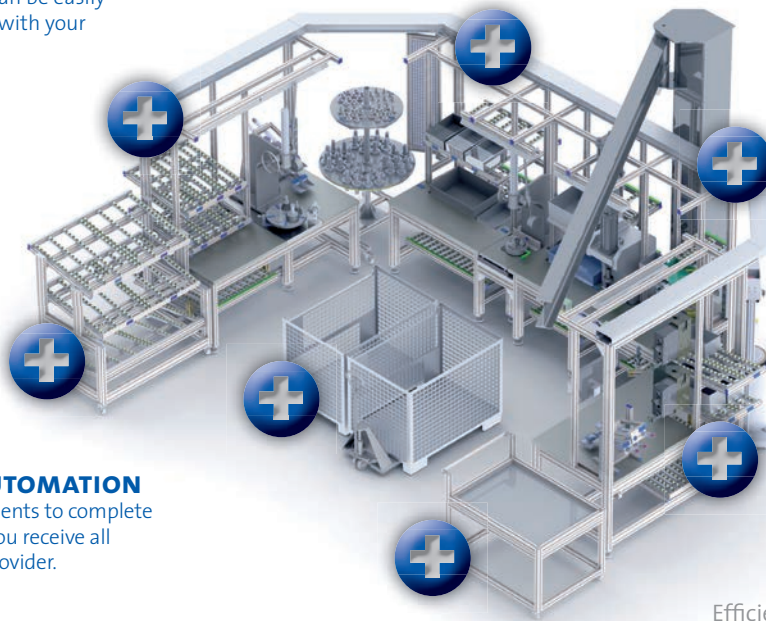
ENGINEERING COMPETENCE

The experience gained from more than 1,000 successfully completed projects flows into every new Schnaithmann development. This engineering competence pays off for you.

Efficiency Plus:

HIGH AVAILABILITY

Our comprehensive range of individual components and replacement parts offers you short delivery times and rapid availability.



24h

Efficiency Plus:

FULL-SERVICE AUTOMATION

From individual components to complete workstation solutions, you receive all services from a single provider.



Efficiency Plus:

COMMITMENT TO QUALITY

Our high quality products are defined by the high quality of their individual parts. The result is durability and long service lives.

Efficiency Plus:

ERGONOMICS

Profit from our production-optimized workstation solutions that adapt ergonomically to your work assignments..

Efficiency Plus:

YOUR COMPETITIVE ADVANTAGE

Gain an advantage from our knowledge of the latest application methods: lean production, KVP, 5S, Poka Yoke, TQM, Six Sigma, value stream mapping, SMED.

Components and Workstation Solutions

As versatile and variable as you like: the Schnaithmann modular assembly system. A flexible, aluminum profile system whose versatility and broad range of application makes it ideally suited to all of your work assignments and workstation demands. **By professionals for professionals.**



One profile system – unlimited possibilities

Our flexible profile system offers you an extensive foundation for performing all material-flow and handling assignments in workshops, warehouses and offices.

The system ranges from individual components to simple material racks and customized, multifunctional workstations.

Today's production environments are expected to keep pace with fast changes. Particularly in the case of workstations, the question arises: what system will ensure flexibility over the long term? While the answer naturally depends on one's individual needs, it is clear that fast, proven and efficient solutions are needed. These should accommodate all types of locations, remain as adaptable as possible and always be equal to the latest production dynamics. **We look forward to your inquiries and the opportunity to provide you with a tailor-made solution.**

YOUR ADVANTAGES:

- ▶ CUSTOM SOLUTIONS
- ▶ 24-HOUR AVAILABILITY FOR ALL STANDARD COMPONENTS
- ▶ RELIABILITY
- ▶ ERGONOMICS



Workstation solutions – custom adapted to your requirements



Assembly desk with adjustable desktop

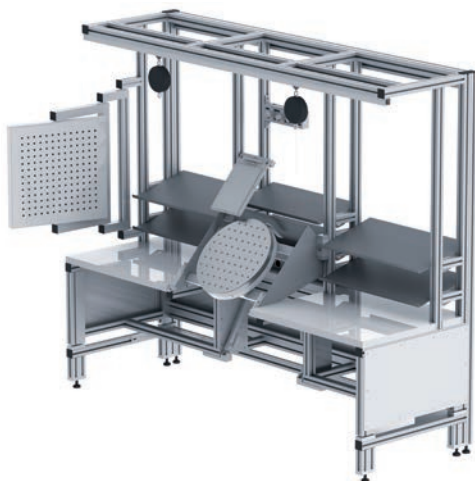


Measuring station with integrated granite desktop and turntable

Kanban system for diverse containers



Assembly workstation for impaired employees



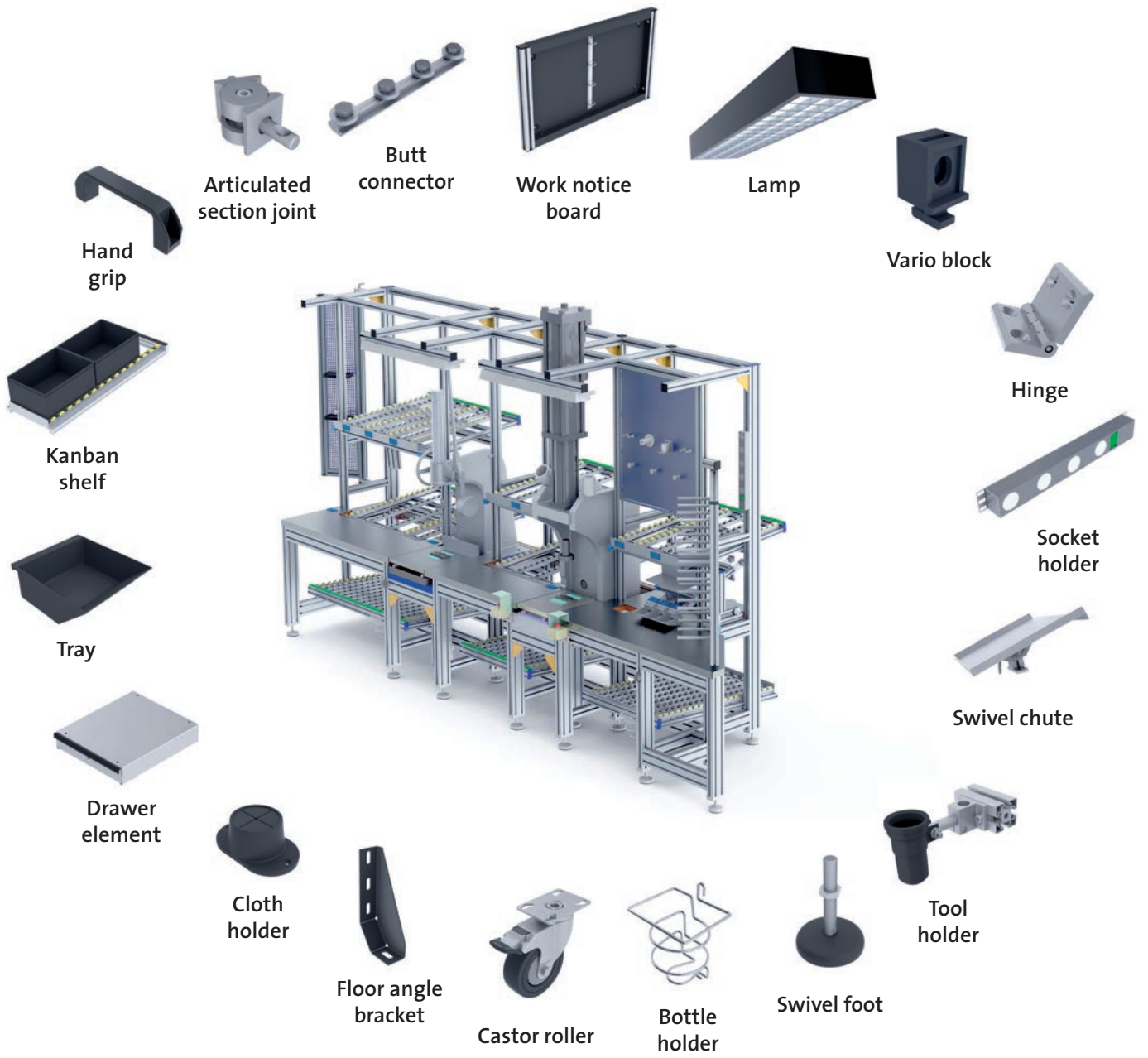
Cockpit workstation ergonomically designed, accommodates sitting and standing, height-adjustable



The profile system with the greatest range of applications: optimally adapted to your requirements.

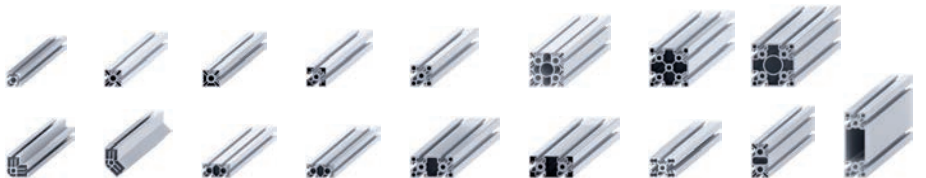


Quality components – in a comprehensive product range



Profile compatibility

Our diverse range of products can also be combined with many other systems.



Schnaithmann Full-Service Automation



System Solutions	Product Solutions	Services
Assembly and Automation <ul style="list-style-type: none">> Production lines> Assembly systems> Assembly stations> Robot cells	Modular Transfer Systems <ul style="list-style-type: none">> Double-track belts> Chain conveyors> Friction roller conveyors> Belt conveyors	<ul style="list-style-type: none">> Application consulting> Planning> Construction> Hardware and software> Documentation <hr/> <ul style="list-style-type: none">> Own production> High availability> Logistics <hr/> <ul style="list-style-type: none">> On-site commissioning> Maintenance> Global service
Material Flow and Handling <ul style="list-style-type: none">> Materials handling engineering> Handling systems> Workpiece processing> Process chains	Flexible Profile Systems <ul style="list-style-type: none">> Aluminum profile systems> Kanban systems> Workstations> Safety systems	

Schnaithmann Maschinenbau GmbH

Fellbacher Strasse 49
73630 Remshalden-Grünbach
Germany

Telephone +49 (0) 71 51 - 97 32-0
Fax +49 (0) 71 51 - 97 32-190

info@schnaithmann.de
www.schnaithmann.de

